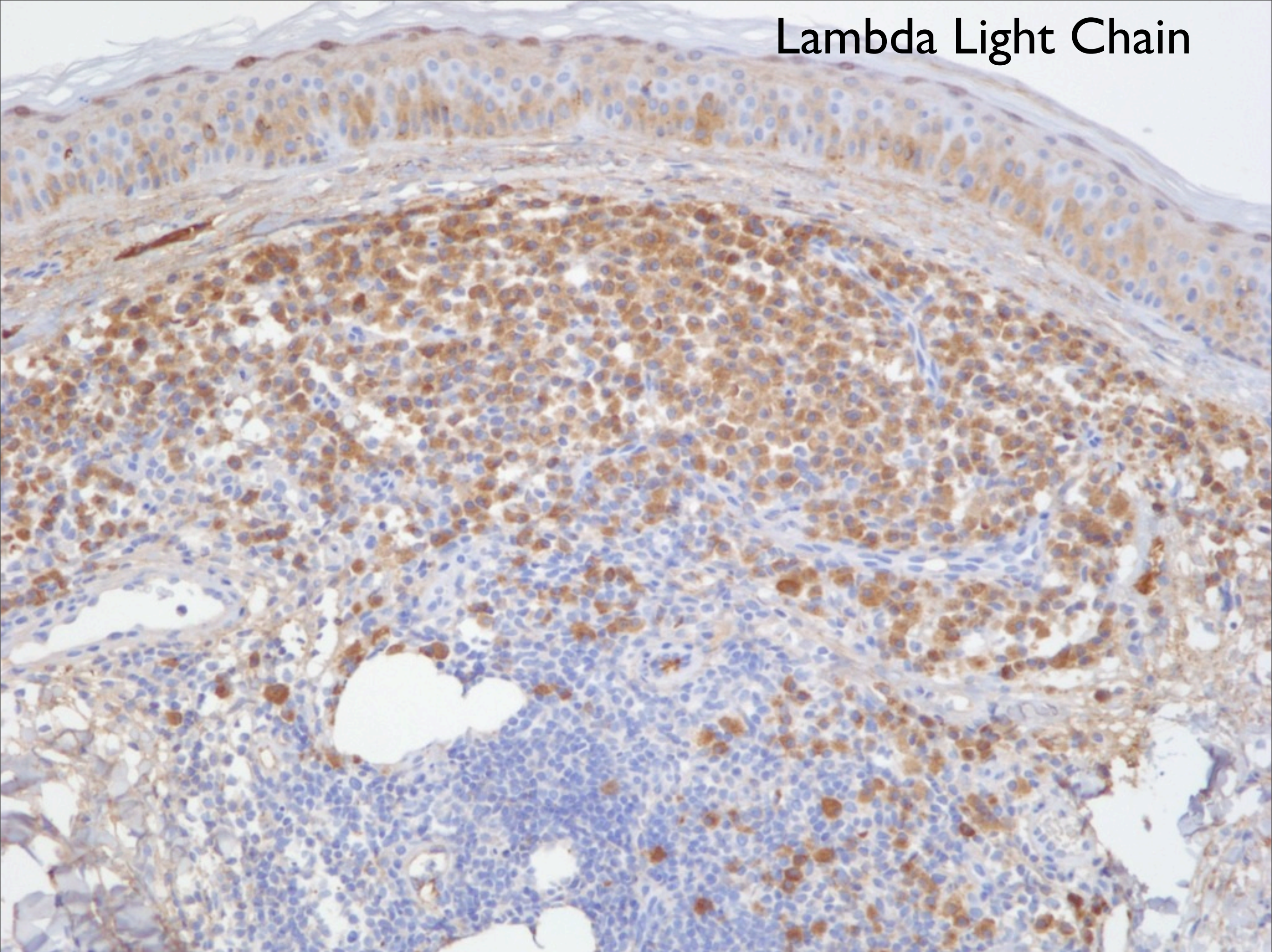


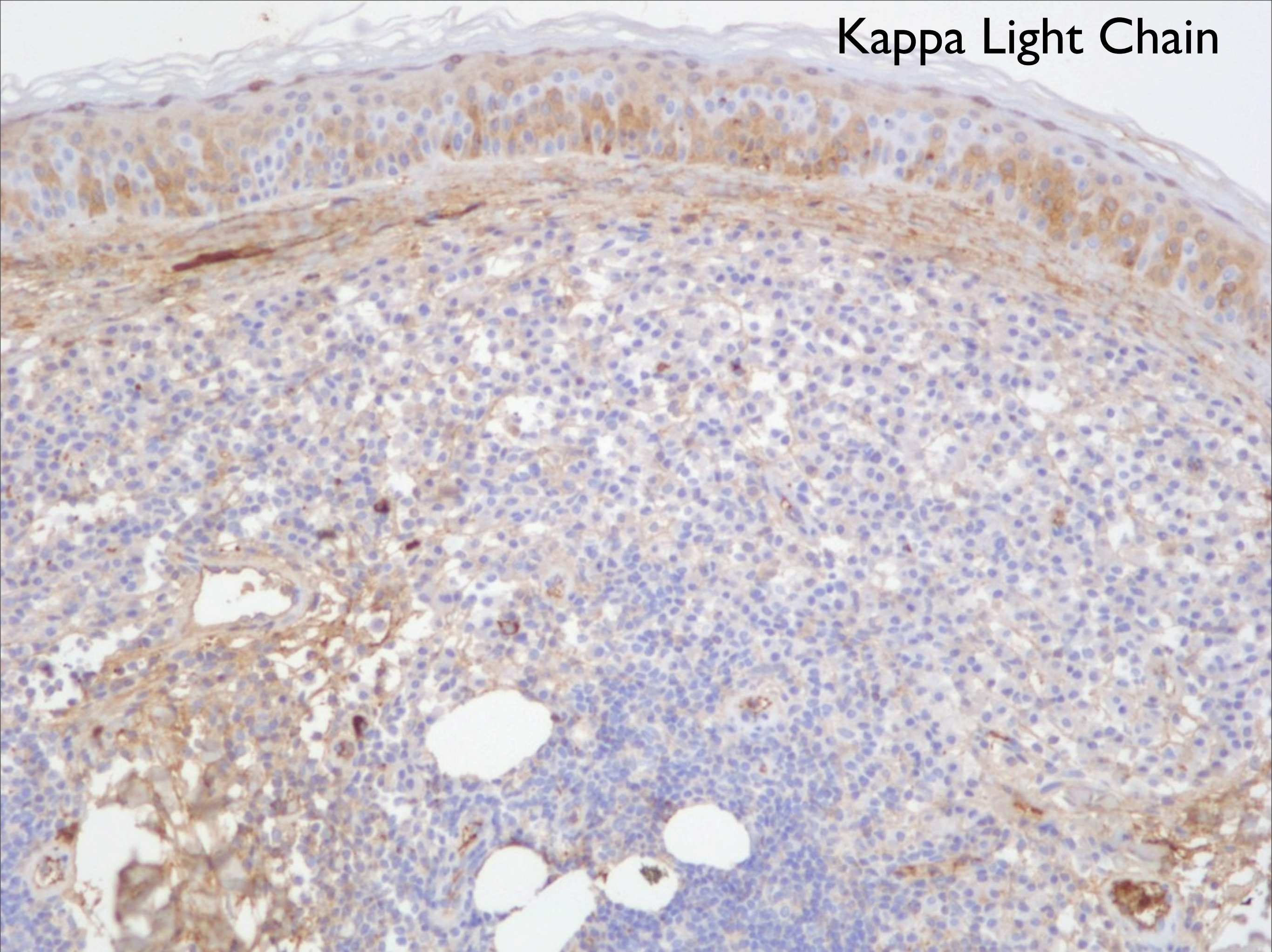


# Lambda Light Chain





# Kappa Light Chain



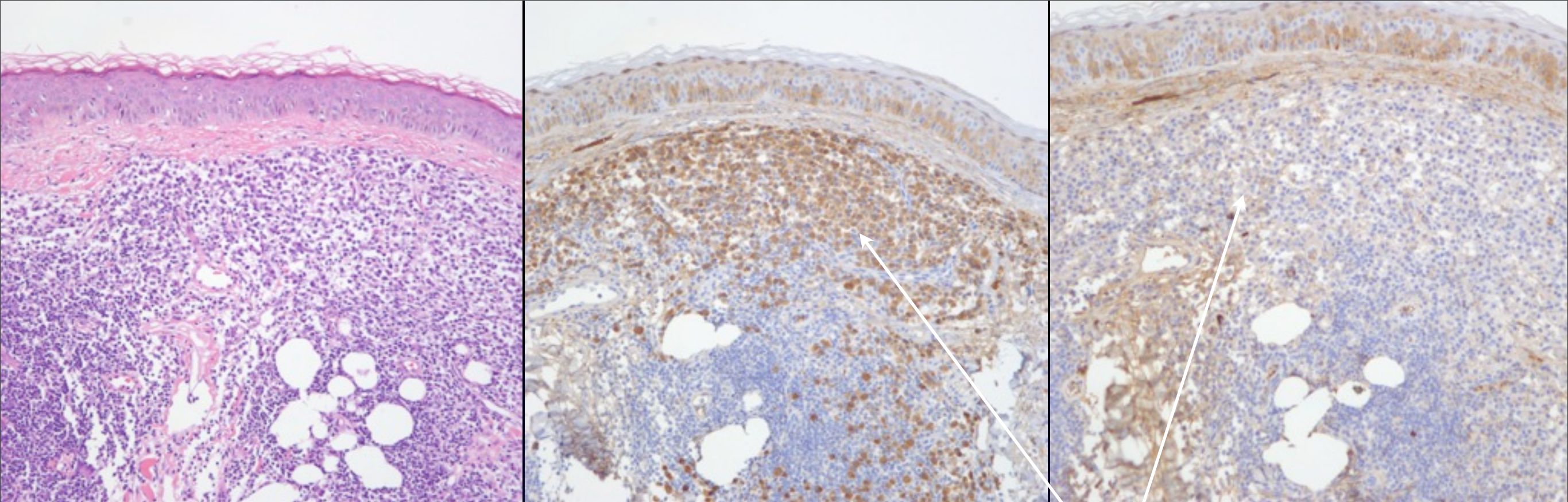


# Cutaneous Plasmacytoma

# Notes

- Plasma cell infiltrates may be seen in numerous inflammatory and neoplastic conditions
- Look for light chain restriction pattern
- Rule out systemic plasma cell dyscrasia secondarily involving the skin





Diffuse plasma cell infiltrate

Plasma cells may show atypia  
with Dutcher bodies,  
multinucleation  
or nuclear irregularities.  
Occasional blasts may be  
present

Look for light  
chain restriction